

Activating & Registering your Autodesk Software Online

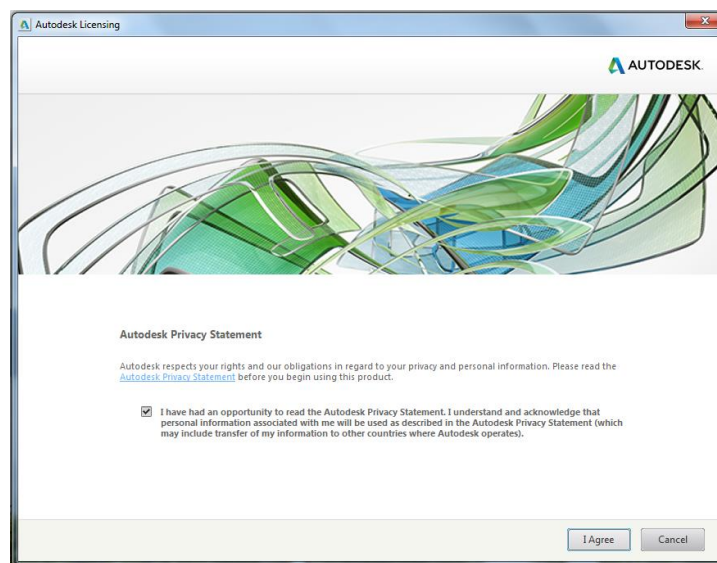
During product activation, your serial number and product key are verified and licensed to run on your computer. Activation is only required for single-user Autodesk licenses. If you have a serial number and product key when you install your software, activation will be part of the installation process.

Activate Online after Installation

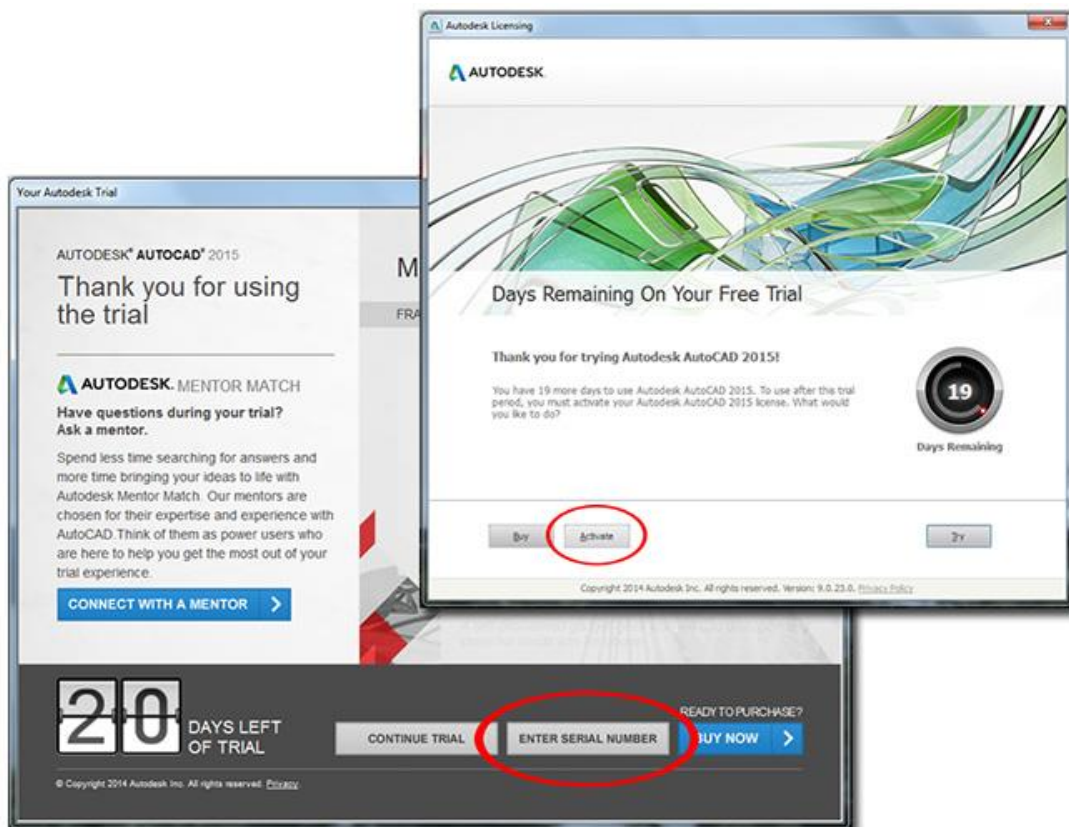
The steps below illustrate the process of activating and registering your Autodesk software online the first time you launch a new program after installation.

To activate and register your software:

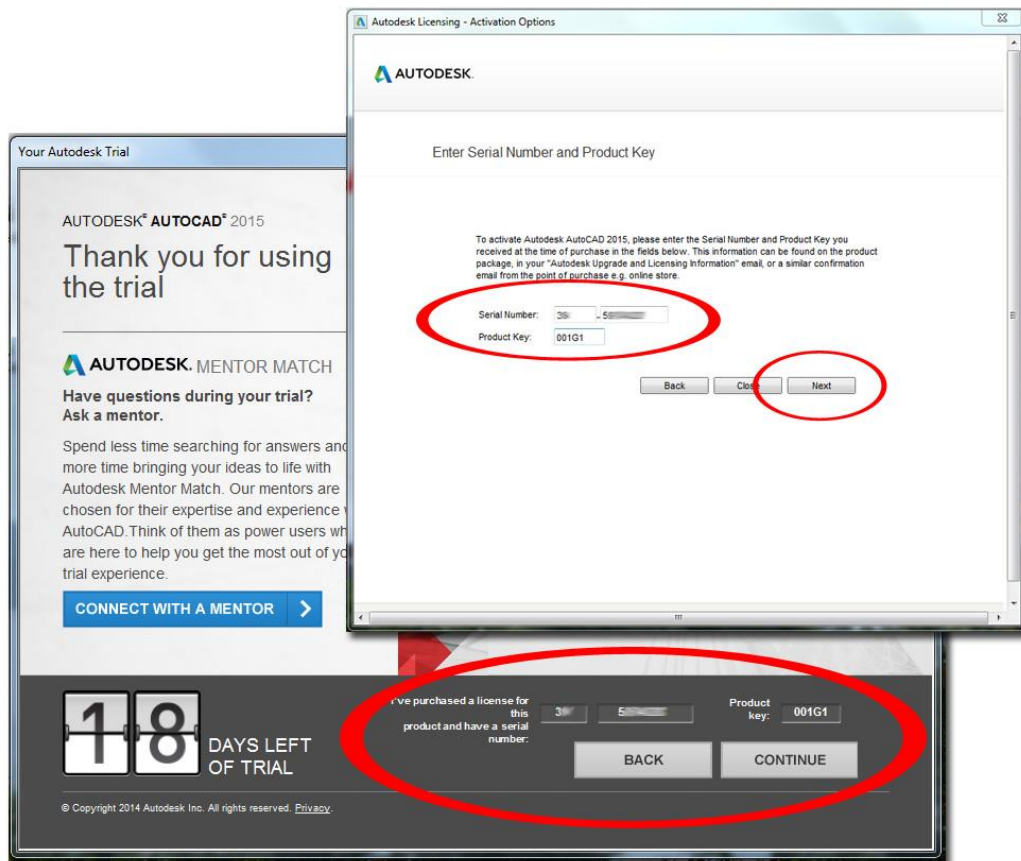
1. Launch your Autodesk product by clicking on the **(product name).exe** file, which may appear on your single-user access and is typically saved under your Programs (Windows) or Applications (Mac) folder.
2. Check the box on the **Autodesk Privacy Statement** screen and click the 'I Agree' button to indicate your acceptance of the terms and conditions. The privacy statement only appears the first time you launch the software.



3. Click the **Enter Your Serial Number** or **Activate** button (depending on your software version) when presented with the Free Trial screen.

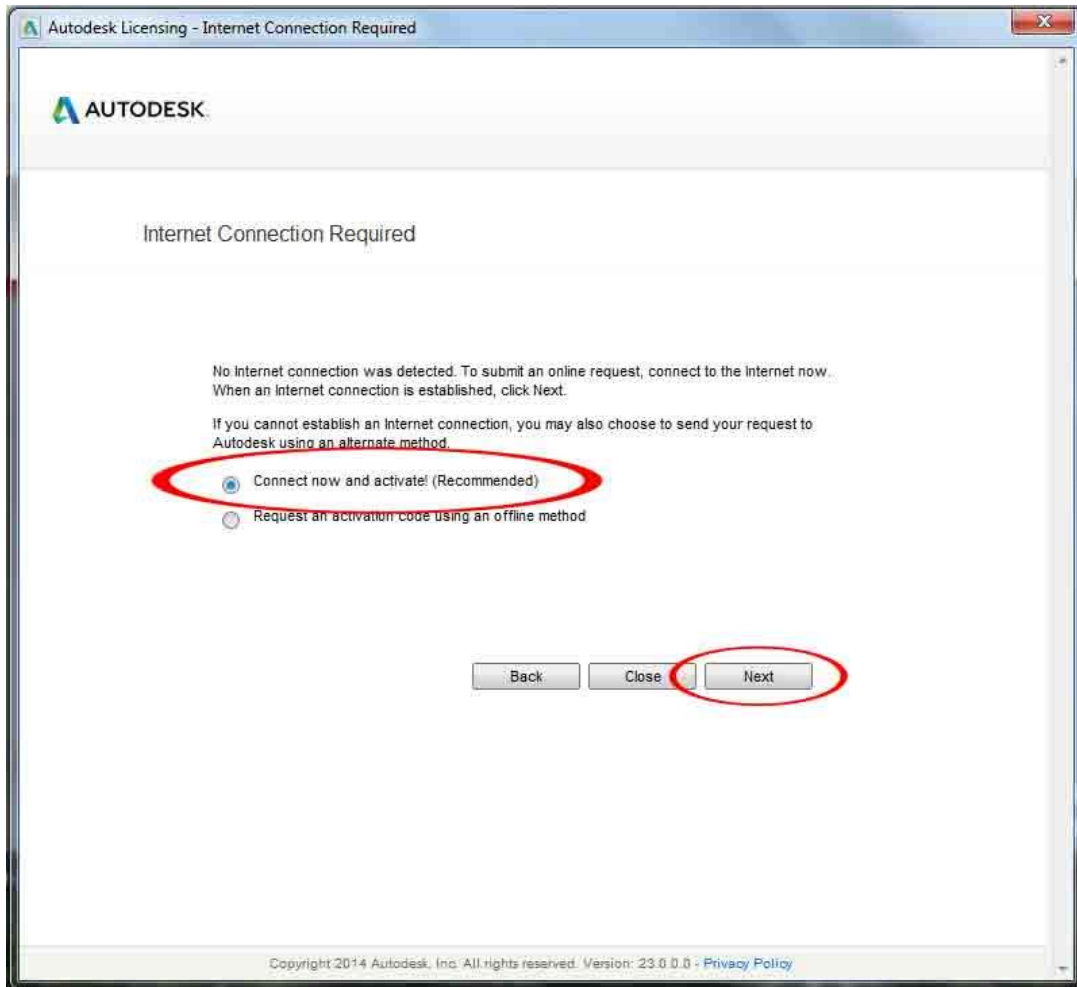


4. Enter your [Serial Number and Product Key](#) and click the **Continue** or **Next** button (depending on your software version).



5. Select **Connect now and activate!** And click **Next** if prompted to activate online. In most cases, activation will start automatically if you're already online.

Note: If you can't connect or have restricted Internet access you'll need to [manually activate your product](#).



To Register During Activation:

If the Serial Number you entered hasn't been registered to an Autodesk Account, you'll be asked to either [create an account](#) or log in to your existing account to register.

1. Enter your **Autodesk ID** and **Password** and click **Login**. If you don't have one, click **Create User ID Now** and follow the on-screen instructions.



Log In

Are you a New User? Click "Create User ID Now".

Please enter your User ID, Password and click "Log In" to access the Autodesk service you requested. You can use your existing Subscription Center or Partner Center User ID and Password.

Registered Autodesk users are able to access various Autodesk services including:

- Product Registration and Activation
- Subscription Center
- Partner Center
- Web Support

Users from Japan with an existing Contact ID, please [click here](#).

The information you provide will be used by Autodesk to register and/or issue your activation code, to keep you informed about our products and services, and to ensure that you benefit from being an authorized Autodesk user. Autodesk does not sell or otherwise provide your information to anyone outside of Autodesk or our Authorized Business Partners. If you wish to correct your registration data, please click the link below to contact Autodesk or contact your local Autodesk office.

Log-in to Autodesk

Don't have an Autodesk User ID?
Signing up is quick and easy!

Create User ID Now

User ID

Password

Remember Me

[Forgot your User ID?](#)
[Forgot your Password?](#)

Log In

© Copyright 2012 Autodesk, Inc. All rights reserved. [Legal Notices & Trademark](#) - [Privacy Policy](#) - [Contact Autodesk](#)

- If you have multiple Accounts, select the one you want to register your product to and click **next**.

Choose Account

User ID	First Name	Last Name	Preferred Language	Edit
myID	John	Smith	English (en)	Edit

Product: **AutoCAD Architecture 2013**

Serial Number: XXXXXXXXXX

Request code: **F9JQ NE1Q D05P 4280 LVCW 1EXJ F8XE LE1Z**

Accounts

Please select the Account to register your product to:

Select	Account	Address	City	State	Zip Code	Country	Phone
<input checked="" type="radio"/>	Autodesk Inc	111 McInnis Pkwy	San Rafael	California	94903-2700	United States	
<input type="radio"/>	MyCompany	5 Elm Road	Anytown	California	2002	United States	

Add New Account
Remove Account
Close
Next >>

© Copyright 2012 Autodesk, Inc. All rights reserved. [Legal Notices & Trademark](#) - [Privacy Policy](#) - [Contact Autodesk](#)

- The activation process completes automatically and saves your **activation information** in the specified location. Click **Finish** to close the activation wizard.

